

APS-104 Labeler

Automatic Pressure Sensitive Top Labeler



Key Features:

- Label Learn™ (Automatic label setup)
- Label Head Dispenses up to 6" (15 cm) Tall Labels
- In Line Automatic Applications or Semi Automatic Use
- Touch Screen Control System with Job Memory
- Heavy Duty Construction for 3 Shift Operations
- Sanitary Stainless Steel Frame
- Easy Adjusting Hand Wheels for Quick Setup
- Fully Synchronized Conveyor / Label Head, with 8 Different Speed Selections
- Height Adjustable Conveyor

Options:

- Hot Stamp Date/Lot Coder
- Alpha Numeric Starter Kit
- Pneumatic Separator
- Clear Label Sensor
- Wheel Separator
- Casters

Labelette
Labelers®

2980 Scott St, Vista CA 92081 • 760.734.4177 • Fax 760.734.4188
Email: Sales@AccutekPackaging.com • AccutekPackaging.com

ACCUTEK
Packaging Equipment Companies, Inc.

APS-104 Labeler

Automatic Pressure Sensitive Top Labeler

Labelette's APS-104 Top Labeler is economical, self contained and easy to operate. This automatic labeling system comes equipped with a height adjustable 4 ft. variable speed belted conveyor. Additional features include a stepper motor drive for labeling, power assisted web take up, full tamp station, auto speed adjust (all motors synchronized), and Photo Eye (non contact) sensors for label gaps and containers, label learn for new labels. The easy to use design makes it simple to change container and label sizes. The **APS-104** can dispense up to a 6" tall labels and up to 11 3/4" Long.

The speed, versatility, and reliability of the **APS-104** is comparable to and in many cases exceed the industry leaders in labeling equipment technology-usually at a fraction of the price. Our Labelers are ideal for all cartons or tubs made from plastic, metal, fiber, or glass. The **APS-104** handles square, flat, and indented containers.

Feature Comparison Chart	Labelette	Competitors
• Label Learn™ measures the label and adjusts the sensor accordingly	YES	NO
• All motors are automatically synchronized for consistent efficient labeling	YES	NO
• No repositioning of label sensor is required for various label lengths	YES	NO
• One touch HMI Touch screen adjustment to change labeling speed	YES	NO
• Up to 30 job memories	YES	NO
• Touch screen with help menu's and trouble shooting guide	YES	NO
• LabelLearn™ ensures labels won't run out with a programmable label counter (for precise run of a set number of labels) to auto-stop	YES	NO
• Total bottles labeled counter	YES	NO
• LabelLearn™ can automatically stop labeling when a label is missing from the label roll	YES	NO
• Manufactured with major worldwide components including Panasonic, AllenBradly and Parker Hannifin. Unlike the proprietary over priced Components of our competition	YES	NO
• Accutek stocks over 27,000 different parts in over 40,000 sq ft of automated warehouse dedicated to ensuring next day in stock part delivery for over 20,000 customer machines currently in use	YES	NO
• Accutek machinery is designed in the USA and over 80% of Accutek's Product are manufactured in the USA by an American Company	YES	NO

Dimensions:

Length: 57" (145 cm)
Depth: 33.5" (85 cm)
Height: 98.5" (250 cm)

Weight:

Approx. ~1335 lbs. (605.5 kg)

Filling Speed:

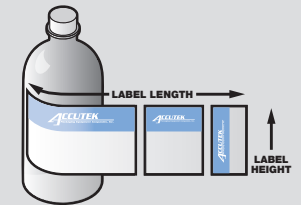
Up to 110 PPM

Filling Size:

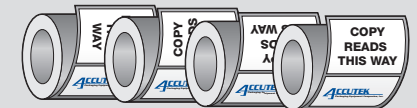
8-60 mL

Electrical:

220 VAC, 3 Phase, 50 Hz



Label Dimentions



Label Direction is Job Specific

(Always Outside Peel)

Labelette
Labelers®

ACCUTEK
Packaging Equipment Companies, Inc.